



**Information  
Services  
Corporation**

**POLICY AND PROCEDURE**

**Number**  
**GO-05/008**

**Page**

1 of 2

**Owner/Manual**  
Surveys and Mapping

**Section**

**Last Revision**

**Policy Name**  
**Intersecting Quarter Section Lines**

**Effective Date**  
May 20, 2005

**Revised Date**

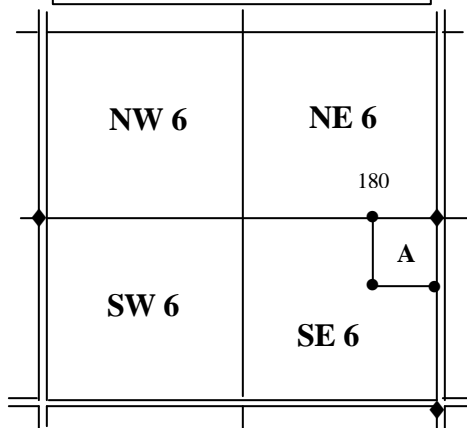
**Policy Statement:**

Quarter section lines shall be deemed a surveyed line for the purpose of intersecting with subsequent surveys only after a monument has been established on the quarter section line by a secondary survey. A secondary survey is any type of survey recorded in the Land Surveys Directory where the survey took place subsequent to the original township surveys. Reference surveys showing reference monuments with corresponding measurements along a quarter section line are deemed to be surveyed lines.

A quarter section line will no longer require intersection with subsequent surveys when a plan in the Land Surveys Directory shows only angles and distances along a quarter section line with no monuments established. An exception to this would be old town site plans where it is not clear whether or not monuments were established on the quarter section line but angles and distances are shown to indicate the quarter section line has been measured. In these situations the quarter section line will be deemed to be a surveyed line and will require intersection by subsequent surveys.

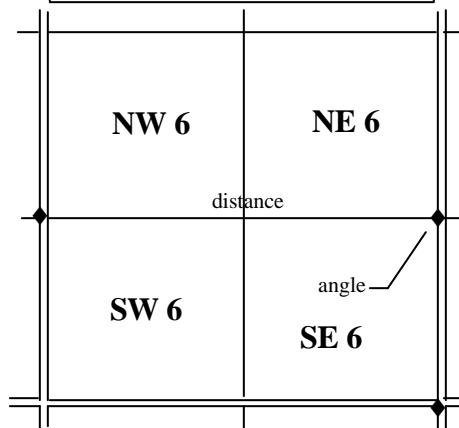
**Scenario A:**

In this scenario, Parcel A has measured the quarter line and established a monument on the quarter line. All subsequent surveys must intersect this quarter line.



**Scenario B:**

In this scenario, the quarter line has an angle and distance shown on it, but since a secondary monument does not exist on the quarter line, it is not considered a surveyed line. Subsequent surveys do not have to intersect the quarter line.



<p><b>Purpose:</b></p> <p>Quarter section lines were not surveyed when the township system was originally laid out. Unless some survey activity took place subsequent to the original township surveys, the quarter lines would not have to be intersected and monumented, as they are not considered surveyed.</p> <p>As development took place and secondary surveys were conducted, quarter lines began to get surveyed. In the past, prior to technological advances, the quarter lines were actually run and measured with the angles and distances shown on the plan. In these cases, the quarter lines were deemed surveyed and would require monumentation when intersected by future surveys.</p> <p>As survey equipment and procedures changed and particularly now with GPS being the standard measuring tool, measurements to and along the quarter lines are easily attainable without actually running the lines and the measurements are often shown on plans. These additional measurements are valuable and strengthen the survey fabric. Continuing the current practice would result in many quarter section lines being deemed surveyed and require new surveys to intersect them. This may prove impractical and costly and could result in lost survey information.</p> <p>This policy was developed in consultation with the Saskatchewan Land Surveyors Practice Committee, the Controller of Surveys and ISC's Surveys and Mapping, to enable measurements to be shown on a plan along quarter section lines without forcing subsequent surveys to intersect quarter section lines.</p>
<p><b>Scope:</b></p>
<p><b>Procedure:</b></p>
<p><b>Compliance with Policy:</b></p>
<p><b>Alignment:</b></p>
<p><b>Deviations to Policy:</b></p>
<p><b>Penalties/Consequences:</b></p>
<p><b>Linked Policies:</b></p>
<p><b>Approved By:</b></p> <p style="text-align: right;"><b>Name:</b> <i>Ed Desnoyers, Controller of Surveys</i></p> <p style="text-align: right;"><b>Signature:</b> _____ <b>Date:</b> <i>May 20, 2005</i></p>