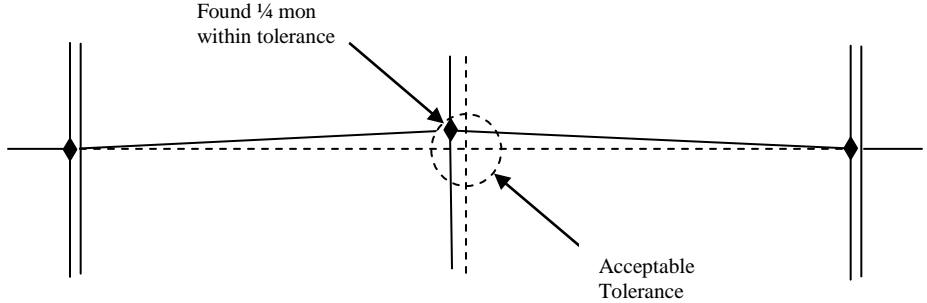
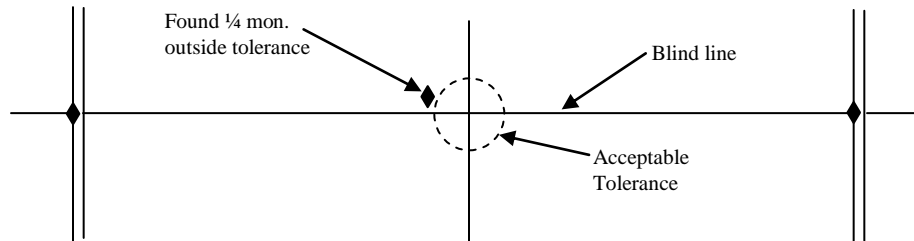
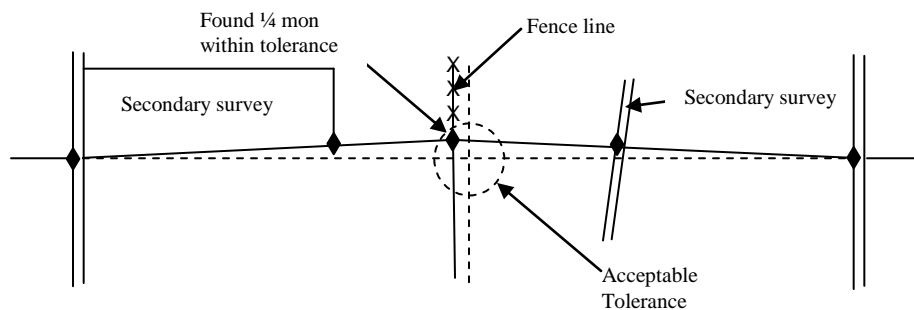
 Information Services Corporation	POLICY AND PROCEDURE	Number GO-09/001
		Page 1 of 4
Owner/Manual Surveys	Section	Last Revision
Policy Name Quarter monuments on Blind lines	Effective Date March 10, 2009	Revised Date
Policy Statement:		
<p>The Standard of Accuracy, when closing on other surveys, as set out in Section 29(3) of <i>The Land Surveys Regulations</i> is dependent on the year of the survey and the plan to which it is being compared and is as follows:</p> <ul style="list-style-type: none"> • For a survey performed in 1950 or earlier, the accuracy factor is 1:1500 (example: 804.672m the allowable tolerance would be 0.536 metres) • For a survey performed between 1951 and 1975, the accuracy factor is 1:2500 (example: 804.672m the allowable tolerance would be 0.322 metres) • For a survey performed in 1976 or later, the accuracy factor is 1:5000 (example: 804.672m the allowable tolerance would be 0.161 metres) <p>1. If a monument previously established by a secondary survey at the 1/4 on a blind line is found not to be at its theoretic position, but is within acceptable tolerances; no subsequent surveys have tied to said monument, no improvements are erected to said monument, and no other reason exists not to correct the position of said monument, the monument may be moved onto an equal split and straight line.</p>		
		

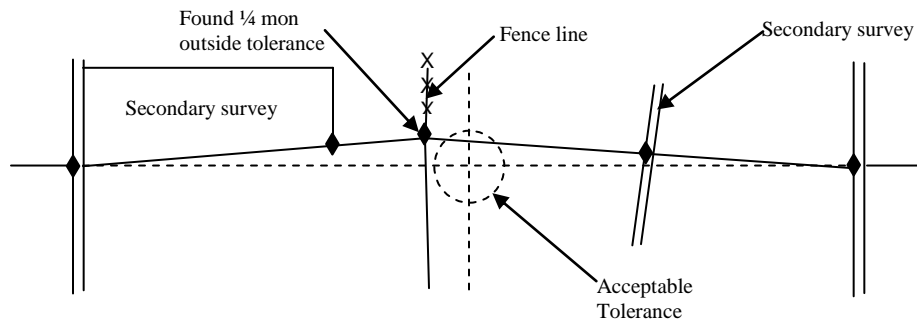
2. If a monument previously established by a secondary survey at the 1/4 on a blind line is found not to be at its theoretic position, and is **outside of acceptable tolerances**; no subsequent surveys have tied to said monument, no improvements are erected to said monument, and no other reason exists not to correct the position of said monument, the **monument shall be moved** onto an equal split and straight line.



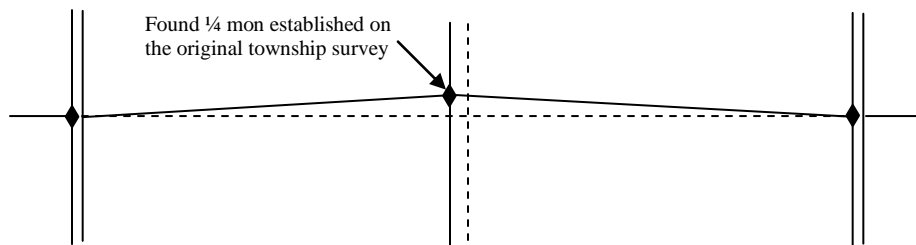
3. If a monument previously established by a secondary survey at the 1/4 on a blind line is found not to be at its theoretic position, is **within acceptable tolerances**, and subsequent surveys have tied to, and/or improvements have been erected to said monument, the **monument shall remain** in its found position.



4. If a monument previously established by a secondary survey at the 1/4 on a blind line is found not to be at its theoretic position, is **outside of acceptable tolerances**, but subsequent surveys have tied to, and/or improvements have been erected to said monument, the surveyor must conduct a detailed investigation and assess all evidence before proceeding with a decision on whether to move the monument or not. The surveyor may contact the Controller of Surveys for advice or instructions. The Surveyors Report shall include all details of the situation.



5. If a monument at the 1/4 on a blind line was **established by the original township survey** and is shown on an approved and confirmed township plat, the said monument shall not be moved whether it is found to be within acceptable tolerances or not.



It should be noted that many situations are unique, and that each situation must be assessed to determine the appropriate course of action.

Purpose:

This policy is intended to clarify survey procedures when a quarter monument on a blind line is not at its theoretic position. **In all cases where a monument is being moved the surveyor who established the monument shall be contacted and advised of the situation or, if the surveyor is no longer practicing, the company responsible for the plan.**

Approved By:

Name: *Jim Boyd, SLS, Controller of Surveys*

Signature:

Date: March 10, 2009