



Owner/Manual Surveys and Mapping

Section

Last Revision

Policy Name Witness Monuments

Effective Date June 29, 2007

Revised Date September 4, 2007

Policy Statement:

For years there have been various methods used by Land Surveyors for establishing Section and Quarter Section corners from witness monuments and for the re-establishment of witness monuments themselves. The following case scenarios are provided to clarifying how these re-establishments should be done:

Scenario #1

Witness monument is found and used to establish the witnessed corner

Generally, the majority of witnessed corners are re-established using one of the two following methods:

1. By producing a straight line along the section line through the witness monument holding the witnessed distance to the witnessed corner. (See Figure 1)
2. By following Section 186 from the 9<sup>th</sup> Edition of the Manual of Instructions for the Survey of Dominion Lands that states:

“When the line through a witness monument and the witnessed corner to the adjacent corners on both sides of the witnessed corner is represented on the official plan as a straight line and the line is found not to be straight on the ground, the deflection is to be left at the witness monument.” (See Figure 2)

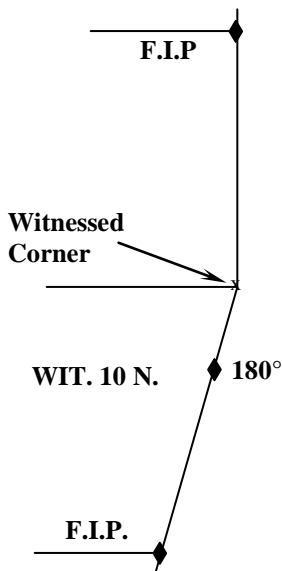


Figure 1

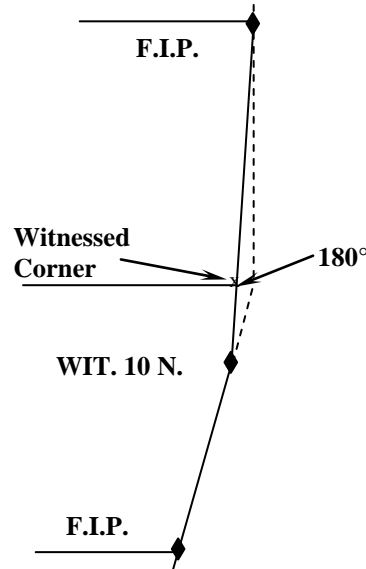


Figure 2

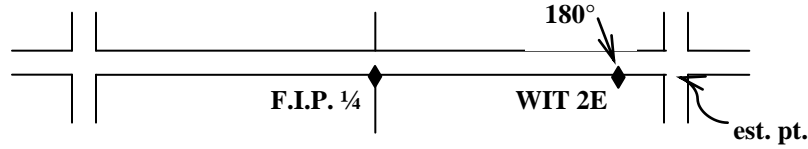
**Note 1:** After the original placement of the witness monument on the township survey, the next Surveyor generally has been allowed to use either of the above methods for establishing the witnessed corner. However, consideration should be given to the bearings shown on the Township Plan to determine which procedure to select. Once a method is used, all subsequent surveys must use the same method unless the Surveyor has a compelling reason not to. In that case, a detailed report must accompany the plan when it is submitted for examination and approval.

**Note 2:** The above applies to witness monuments for all corners on north south lines, township boundaries, or for witness monuments for quarter section corners on east west lines in the interior of townships.

**Scenario # 2**

**Witness Monument for a section corner on an east west line in the interior of a township**

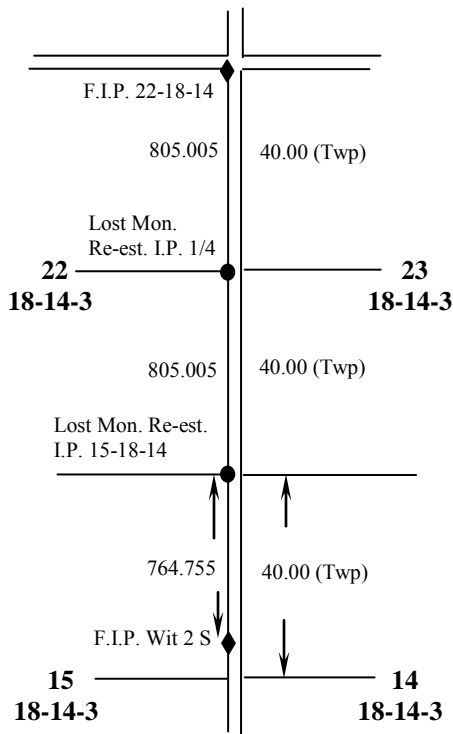
The witness corner shall be established by producing the line through the witness monument to the corner.



**Scenario #3**

**Witness monument is found and used to establish other primary corners**

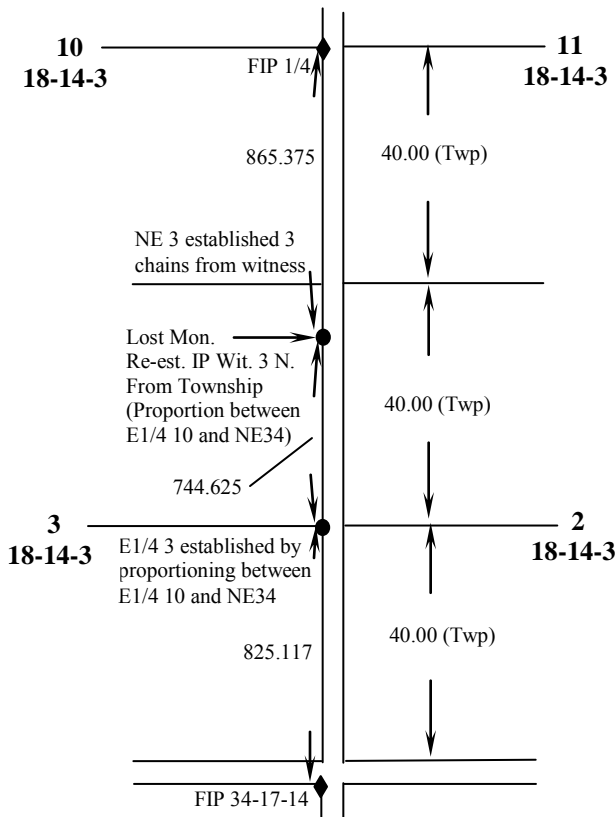
When proportioning in the re-establishment of lost monuments at primary corners where a witness monument is involved, the witness distance from the witness monument to the witnessed corner shall not be included in the overall proportioning. The witness distance shall be subtracted from the overall measurement just like the width of the road allowance is subtracted and not used in determining the proportionate lengths of the quarter sections.



The NE15 and E1/4 22 shall be re-established by proportioning between the two found monuments according to the township plan. The witness distance of 2 chains shall not be used in the proportioning calculation. The total distance used in the calculation will be 40+40+38=118 (twp). The total measured distance between NE22 and Witness Monument = 2374.766. The resulting proportionate distances are 805.005, 805.005 and 764.755.

**Scenario #4  
Witness Monument is lost**

If a witness monument is lost, it shall be re-established using the same procedures as for other primary monuments described in *The Land Surveys Regulations, 2000*. In many cases, this will involve re-establishment by proportioning according to the Township Plan. The witness distance is then used from the re-established witness monument to establish the witnessed corner. It is not acceptable to ignore the position of the lost witness monument and simply establish the witnessed corner using proportionate distances from the township plan.



The lost witness shall be re-established by proportioning between the two found monuments according to the township plan. The witness distance of 3 chains shall be added to the ESE10 and subtracted from the ENE3 in the proportioning calculation. The total township distance used in the calculation will be  $43+37+40=120$  (twp). The total measured distance between NE34 and the E1/4 10 =  $2435.117-20.117=2415.000$ . The resulting proportionate distances are 865.375, 744.625 and  $805.000+20.117=825.117$ . The NE3 is established on the witnessed distance of 3 chains from the re-established witness monument.

**Purpose:**  
This policy provides guidance for Surveyors when re-establishing corners that involve witness monuments. In the past, there have been some inconsistencies in the application of these requirements. For years there have been discussions amongst Surveyors as to which method is correct with valid arguments made for either method. This policy is intended to provide consistency in the processes used for future re-establishments involving witness monuments.

**Approved By:**  
**Name:** *Ed Desnoyers, Controller of Surveys*

**Signature:** \_\_\_\_\_ **Date:** *June 29, 2007*